

## Certificate of Analysis

Date: 2024-01-18 15:52:22 -05:00  
 Serial: LL030561  
 Operator: T.H.  
 Sample ID: DIAMONDS 1.18.24  
 Method: LightLab HPLC  
 Test Type: Concentrate  
 Weight / Volume: 0.101 g  
 Solvent: 30 ml  
 Temperature: 28.8 °C  
 Notes:

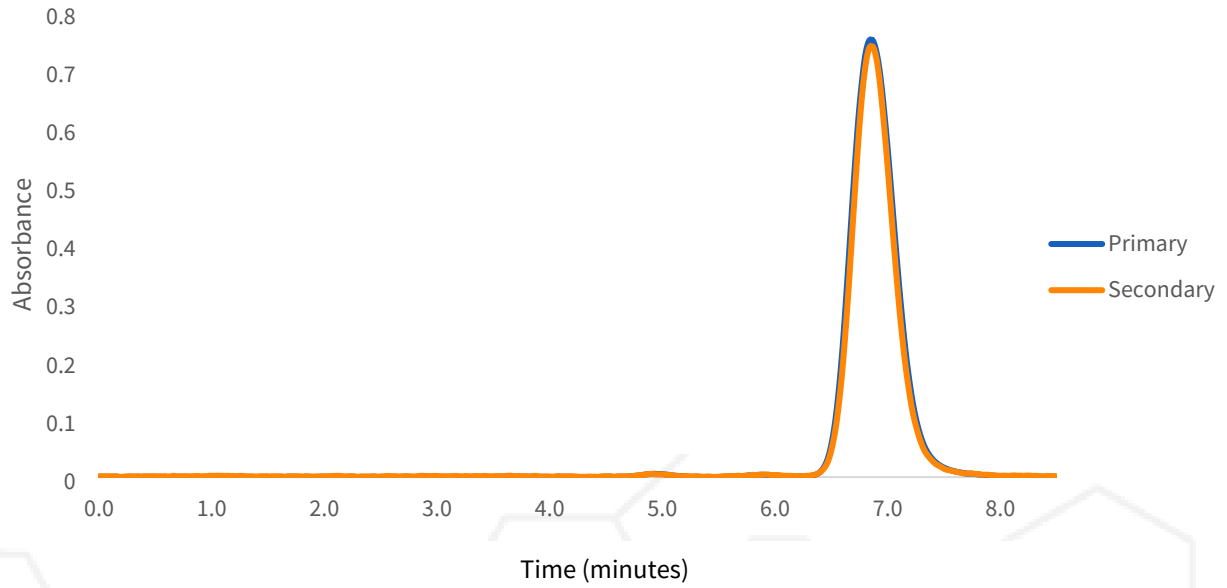
Cultivar: DIAMONDS 1.18.24  
 Moisture: 0.0%  
 CoA Revision: 0  
 Calibration Exp: 2025-01-05  
 Product:  
 SKU:  
 Batch:

### Cannabinoid Profile

Analyte	%	LOQ
THC-A	98.1	1.5
Δ9-THC	ND	1.5
CBD-A	ND	1.5
CBD	ND	1.5
CBG-A	ND	1.5
CBG	ND	1.5
CBN-A	ND	1.5
CBN	ND	1.5
CBC-A	ND	1.5
CBC	ND	1.5
Δ8-THC*	ND	11.9
Δ10-THC	ND	1.5
THCV-A	ND	1.5
THCV	ND	1.5
<b>Total THC</b>	<b>86.0</b>	
<b>Total CBD</b>	<b>ND</b>	
<b>Total Cannabinoids</b>	<b>98.1</b>	

ND = Not Detected; n/a = Not Analyzed; LOQ = Limit of Quantification; Total THC = (0.877 x THC-A) + Δ9-THC; Total CBD = (0.877 x CBD-A) + CBD. \* Δ8THC has lower precision and higher detection limit than other cannabinoids.

# Chromatogram



# Change History

Date	User	Action
2024-01-18 15:52:22 -05:00		Test Recorded
2024-01-18 16:26:50 -05:00		Generated a CoA (revision 0)



Scan for Authenticity

Approved

Date

The signatory confirms that the Operator has performed the sample preparation according to the LightLab User's Guide. This report is for quality assurance purposes only. These results relate only to the sample included on this report. Orange Photonics makes no claims as to the efficacy, safety, or risks associated with any detected or non-detected level of any compounds reported herein. Orange Photonics makes no claims regarding the adherence to sample preparation guidelines, by the operator, as outlined in the LightLab User's Guide.